



DATE: 21 APRIL 2026

## 1 Sundarban Delta (Source: The Hindu)

*The Sundarbans, a cluster of low-lying islands in the Bay of Bengal, spread across India and Bangladesh, is famous for its unique mangrove forests.*

### **Formation**

- Sundarbans are formed by the deposition of the Ganges, Brahmaputra, and Meghna rivers on the Bay of Bengal.

### **Biodiversity**

- Home to protected species like the estuarine crocodile, water monitor lizard, Gangetic dolphin, and olive ridley. turtle, royal Bengal tiger.



### **Protection Status**

- Sundarban was designated a UNESCO World Heritage site in 1987 (India) and 1997 (Bangladesh).
- Sundarban Wetland, India, was recognised as the 'Wetland of International Importance' under the Ramsar Convention in January 2019.
- It is also protected as a national park and tiger reserve in India.

DATE: 21 APRIL 2026

## 2 Basaveshwara (Source: The Hindu)

*He was a 12th-century poet and philosopher.*

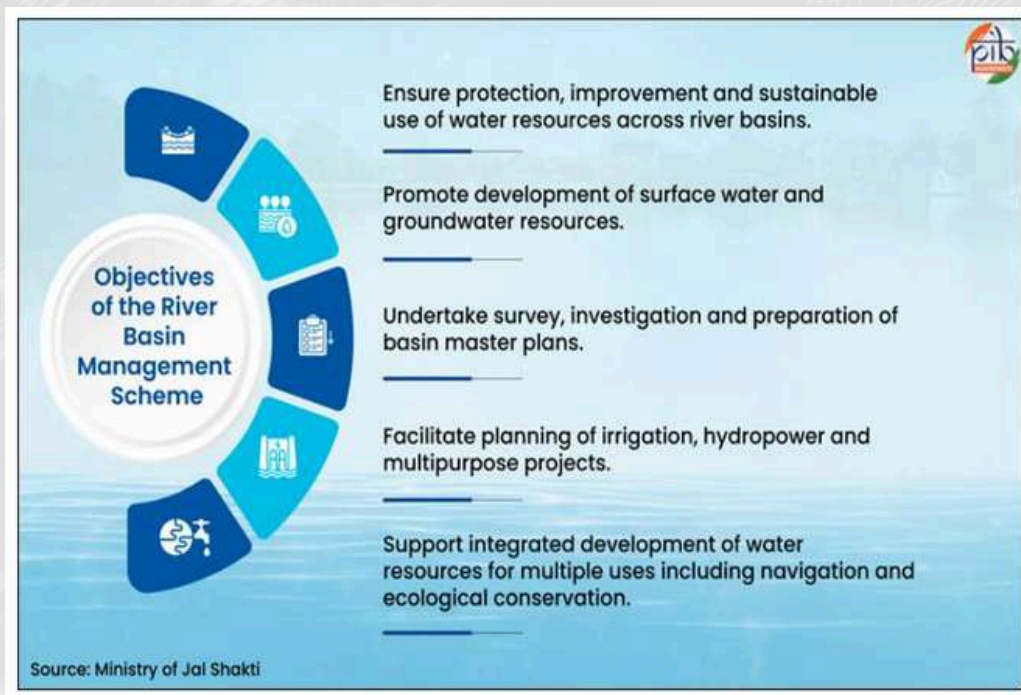
- **Founder of Lingayatism.**
  - The term *Lingayat* denotes a person who wears a personal *linga*, an iconic form of God Shiva, on the body, which is received during the initiation ceremony.
- Basavanna spread social awareness through his poetry, popularly known as *Vachanaas*.
- He developed and inspired a new devotional movement named *Virashaivas*.
- **Social Reforms**
  - He believed in a society free of the caste system, with equal opportunity for all and preached about manual hard work.
  - He also founded the *Anubhava Mantapa*, which was a common forum for all to discuss the prevailing problems of socio-economic and political strata.
- **Key Principle**
  - *Anubhava* (divine experience)
  - *Arivu* (true knowledge)
  - *Achara* (right conduct)



## 3 River Basin Management (RBM) Scheme (Source: *The Economic Times*)

*It aims to ensure the integrated planning, sustainable use, and protection of surface and groundwater resources at the river basin level.*

- Central Sector Scheme under Ministry of Jal Shakti.



- Rather than treating rivers, tributaries, lakes, and groundwater in isolation, the scheme recognises an entire river basin as a single interconnected hydrological unit.

### Geographical Focus

- Strategically important and water-rich but underdeveloped regions, particularly the North Eastern Region and the Indus Basin in Jammu & Kashmir / Ladakh.

### Implementation:

- The RBM Scheme consists of two broad components: the Brahmaputra Board and the Investigation of Water Resources Development Scheme (IWRDS) implemented through the Central Water Commission (CWC) and National Water Development Agency (NWDA).



DATE: 21 APRIL 2026

## STRATEGIC IMPORTANCE OF RBM



- ▶ National water security
- ▶ Cross-border river management
- ▶ Flood-prone regions of the North East
- ▶ Hydropower potential in Himalayan rivers



Source- Ministry of Jal Shakti