

1 Foreign Direct Investment (FDI) (Source: The Hindu)

FDI refers to investment made by a person residing outside India through capital instruments in either an unlisted Indian company or in at least 10% of the post-issue paid-up equity capital (on a fully diluted basis) of a listed Indian company.

Routes of FDI

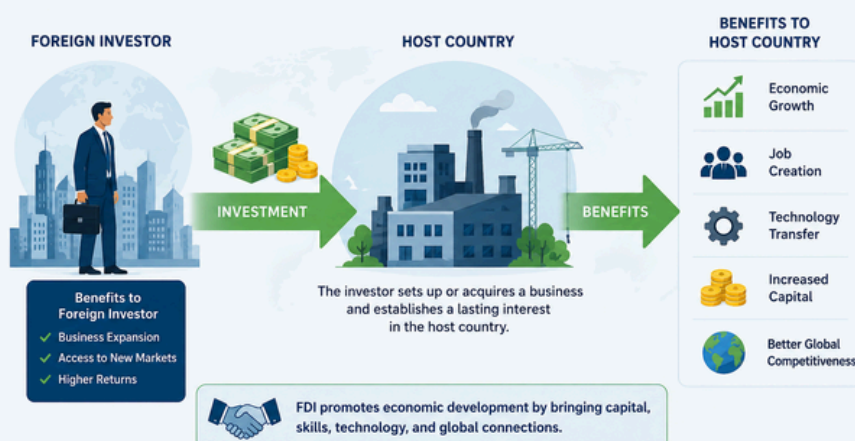
- **Automatic Route:** A non-resident investor or an Indian company does not require any prior approval from the Government of India or the Reserve Bank of India (RBI) to invest. The investor only needs to inform the RBI within a specified timeframe after the transaction.
- **Government Route:** Prior approval from the government is mandatory. The respective administrative Ministries/Departments consider proposals. The Foreign Investment Facilitation Portal (FIFP) acts as the single-window clearance mechanism.

Sectors with FDI Prohibitions

- Lottery Business (including Government/private lottery, online lotteries, etc.)
- Gambling and Betting (including casinos)
- Chit funds and Nidhi companies
- Trading in Transferable Development Rights (TDRs)
- Real Estate Business or Construction of Farm Houses (Note: Development of townships, roads, bridges, and educational institutions is permitted and does not fall under this prohibition)
- Manufacturing of cigars, cheroots, cigarillos, and cigarettes, of tobacco or of tobacco substitutes
- Sectors/activities not open to private sector investment (e.g., Atomic Energy and Railway Operations other than permitted infrastructure projects).

FOREIGN DIRECT INVESTMENT (FDI)

FDI occurs when a company or individual from one country makes a long-term investment in business operations in another country.



2 Hindu Kush Himalaya (HKH) Region (Source: The Indian Express)

Stretching over 3500 kilometres and across eight countries: Afghanistan, Bangladesh, Bhutan, China, India, Nepal, Myanmar and Pakistan.

- **Often referred to as the "Third Pole" due to its vast ice reserves after the Arctic and Antarctic.**
- It runs northeast to southwest and divides the valley of the Amu Darya to the north from the Indus River valley to the south.
- **Source of major river systems like**
 - The Indus, Ganga, and Brahmaputra flow towards the Arabian Sea and the Bay of Bengal
 - Syr Darya and Amu Darya towards the now-dead Aral Sea
 - The Tarim toward the Taklamakan
 - The Yellow River towards the Gulf of Bohai
 - The Yangtze towards the East China Sea
 - The Mekong towards the South China Sea
 - The Chindwin, Salween, and Irrawaddy towards the Andaman Sea

